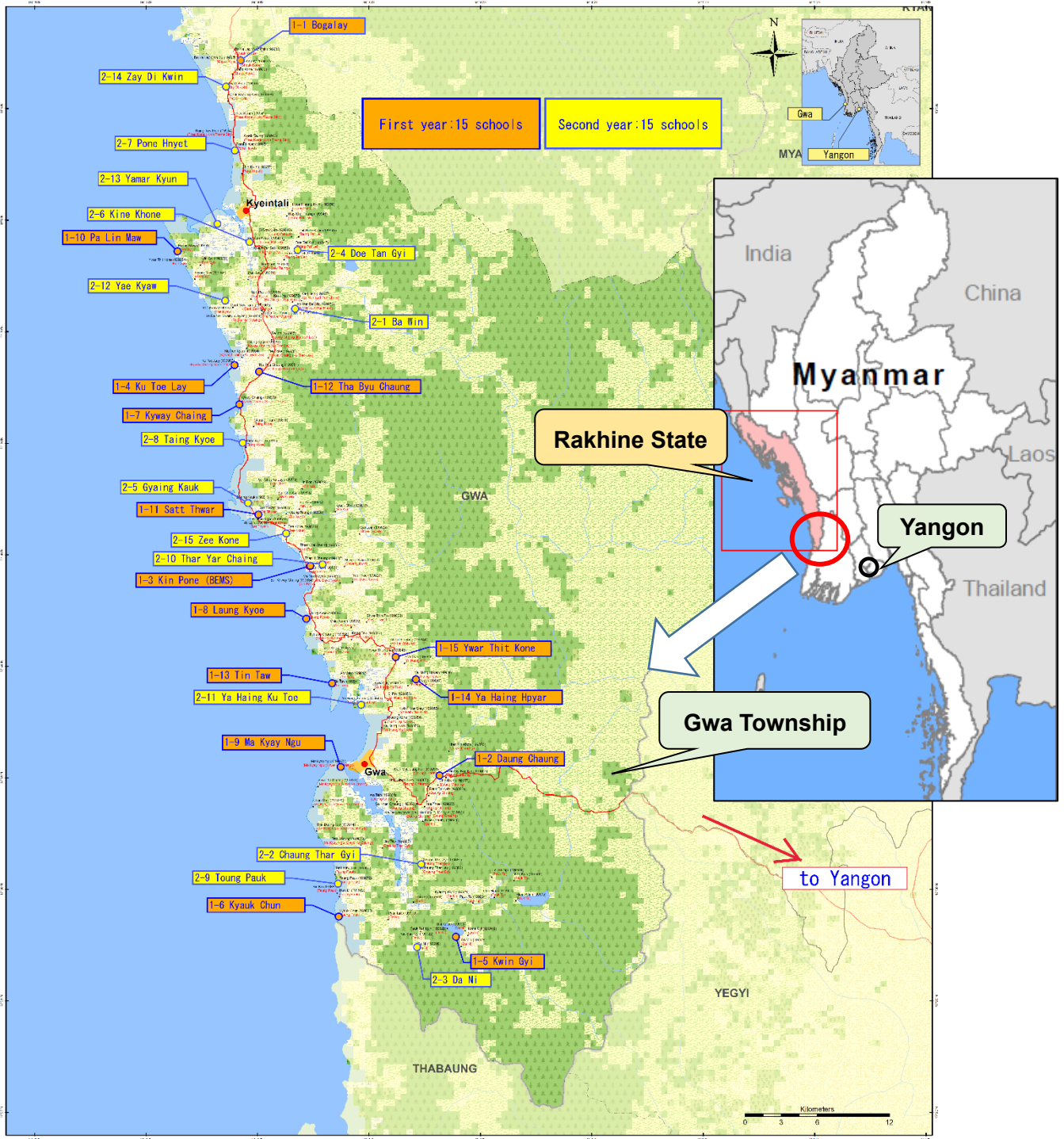


### Gwa Township - Rakhine State



Map ID: MIMU154v04  
 Creation Date: 3 May 2016.A1  
 Projection/Datum: Geographic/WGS84

Date Source:  
 BASE MAP - MIMU/Boundaries - WFP/modified by MIMU 2008;  
 Landcover - I.P. DAAC - MCD12Q1 2011 V3 S1P2 (Type1);  
 Place name - Ministry of Home Affairs (GAD);  
 translated by MIMU  
 Map produced by the MIMU. E-mail: info.mimu@undp.org  
 Website: www.themimu.info

**Legend**

<span style="color:red">●</span> Village	<span style="color:red">—</span> State	<span style="color:green">■</span> Crop and Vegetation	<span style="color:blue">—</span> Snow Ice
<span style="color:red">—</span> Town	<span style="color:red">—</span> Township Boundary	<span style="color:green">■</span> Forest	<span style="color:orange">■</span> Urban Build-up
<span style="color:red">—</span> Road	<span style="color:red">—</span> District Boundary	<span style="color:green">■</span> Mixed Forest	<span style="color:orange">■</span> Bare Land
<span style="color:red">—</span> Railway	<span style="color:red">—</span> State Boundary	<span style="color:green">■</span> Grassland	<span style="color:blue">■</span> Wetland
	<span style="color:red">—</span> International Boundary	<span style="color:green">■</span> Shrubland	<span style="color:blue">■</span> Water
	<span style="color:red">—</span> Non-Perennial/Intermittent/Tackling		
	<span style="color:red">—</span> Perennial/Perennial		

Wing Name:  
 Ting Kwin (156214)  
 (Ting Kwin)

Village Name:  
 Ting Kwin (156214)  
 (Ting Kwin)

Code:  
 Village Tract Name

Scale: 0 3 6 12 Kilometers

Myanmar Information Management Unit (MIMU) is a core resource of the Humanitarian Country Team (HCT) providing information management services, including GIS mapping and analysis, to the humanitarian and development actors both inside and outside of Myanmar.  
 NOTE: Due to the limited space of labels for Villages, some Village's name will not be appeared on this map.  
 Copyright © Myanmar Information Management Unit 2016. May be used free of charge with attribution. For more information see <http://www.themimu.info/info/>. This notice cannot be modified or removed.

Figure-1 Locations of schools with LCA systems and hazard maps